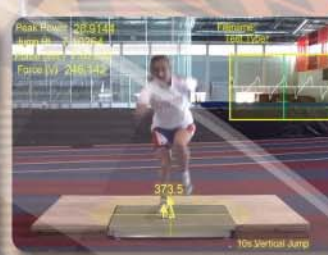
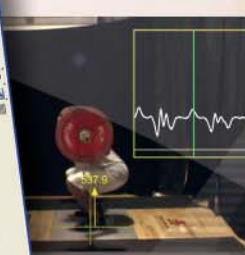


# DARTFISH



SEE. LEARN. SUCCEED.

**CSV  
Reader**



**Your data needs video!**

**Dartfish announces our new CSV Reader.  
A new product plug-in that brings real measured data to life.**

# Integrate lab measured data in your Dartfish video based application!

## Data Linking

- Link CSV data to a video clip
- Link data from multiple files
- Overlay all data on the same video clip

## Automatic Data Handling

- Automatically attempt the detection of the text encoding used
- Include or exclude the header row

## Manual Data Handling

- Define your own headings
- Organize data into columns
- Exclude text delimited by a particular character

## Links Management

- Remove useless links
- Re-establish broken links

## Data Display On The Data Graph

- Synchronize the data to the video by simple drag-and-drop
- Automatic plot of each numerical stream on the Data Graph
- Select and deselect any stream displayed
- Alter the amount of data shown on the graph
- Display data on a single y-axis or on separate graphs for each Data Stream
- Temporarily unlink the graph to the video

## Data Overlay On Video

- Overlay the data graphs on top of the video
- Display numerical values with the text drawing tools
- Use Dartfish Symbol font to create icons to label displayed values
- Display data as a curve on a graph
- Choose one or more Data streams to display on the graph
- Choose the graph layout (value range of the x and y axis)
- Create a new video clip with drawings that can be shared with others



**POLAR**  
LISTEN TO YOUR BODY

The Dartfish CSV Reader may be used with the Polar S625X™ multisport computer watch  
(optional accessories may be required)

## *technical specifications*

The Dartfish CSV Reader Plug-In requires a valid and licensed version 4.5.2 of either Dartfish TeamPro or Dartfish ProSuite installed on your computer *(not included)*.